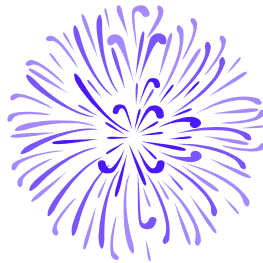


WINTON PRIMARY SCHOOL



RELIGIOUS EDUCATION POLICY

Winton Primary School

Statement for Religious Education

At Winton Primary School, Religious Education is delivered in line with the Dorset Agreed Syllabus, 'Reaction, Reflection, Response' in Key Stages 1 and 2.

WE AIM TO HELP CHILDREN:

- grow in their spiritual development by reflecting about themselves and their relationships
- develop skills and attitudes to help them prepare for adult life
- explore fundamental questions of meaning
- think about their own beliefs, values and commitment
- consider the place of Christianity in their lives and the lives of others
- develop knowledge and understanding of other principal religions in Great Britain (i.e. KS1 Buddhism, KS2 Hinduism, Islam, Judaism)

Approaches and Organisation of Religious Education

Religious Education at Winton Primary School is usually linked and stimulated by the main topic but stands on its own as a discrete subject. We employ a variety of teaching vehicles, including Language, Art, Drama, Music, Dance and Technology. We believe that the use of artefacts, pictures, video, places of worship and visiting speakers help to make this subject more stimulation and relevant for our pupils. We think it important to make opportunities for periods of stillness and reflection.

Our teaching is organised into a range of themes as set out in our Scheme of Work which ensures continuity and progression.

Assessment

We believe that the main assessment in Religious Education is part of the teaching and learning process. We have highlighted many Key assessment stages in our Scheme of Work. Where the aspects of Religious Education work can be formally assessed, this is usually accomplished by:

- a) written work
 - b) oral work
- or
- c) creative and expressive outcomes

Special Educational Needs

We expect all children to be able to respond at their own level when accessing this area of the curriculum. All materials prepared will take into account the needs of the children, as in other areas of the curriculum. We feel that our use of a practical and sensory approach to Religious Education help meet the needs of all our pupils.

Skills and Attitudes

At Winton Primary School, we believe that our Religious Education will help the children develop the skills of:

- reflection (especially about what makes them special)
- empathy (to understand another person's point of view)
- communication (expressively as well as through language)
- reasoning (making comparisons between various beliefs)
- enquiry (asking questions and listening to others)
- analysis and evaluation (consider their own belief in the light of all they know)

We also aim to develop the attitudes of:

- respect
- open mindedness
- self-esteem
- sensitivity
- critical awareness
- appreciation
- wonder

Right of Withdrawal

Parents have the legal right to withdraw their children from Religious Education on the grounds of conscience. If parents have any concerns about the policy, provision and practice of Religious Education at Winton Primary School, they are encouraged to contact the Head Teacher or Religious Education Co-ordinator.

Summary

We hope that Religious Education is interesting and relevant for all the pupils at Winton Primary School. We regard our Religious Education as contributing to the caring, sharing ethos of the school. We feel that it reflects the unique needs of the Winton community by developing our children's respect and sensitivity for others.